

Maintenance of Redington CD reel

1. Rinse the reel thoroughly in freshwater to remove sediments; if applicable.
2. Dry all reel surfaces.
3. Apply a thin layer of grease to all gear surfaces.
4. Lubricate the shaft (21) with grease.
5. Apply a small amount of oil to one way bearing(16), located inside the spool.
6. Over lubrication is detrimental to the performance of this reel and is not recommended.

Changing the reel from Left to Right Hand Retrieve

1. Remove the spool from the frame.
2. Remove the one way retainer #17.
3. Remove and invert one way bearing #16.
4. Replace one way retainer #17.

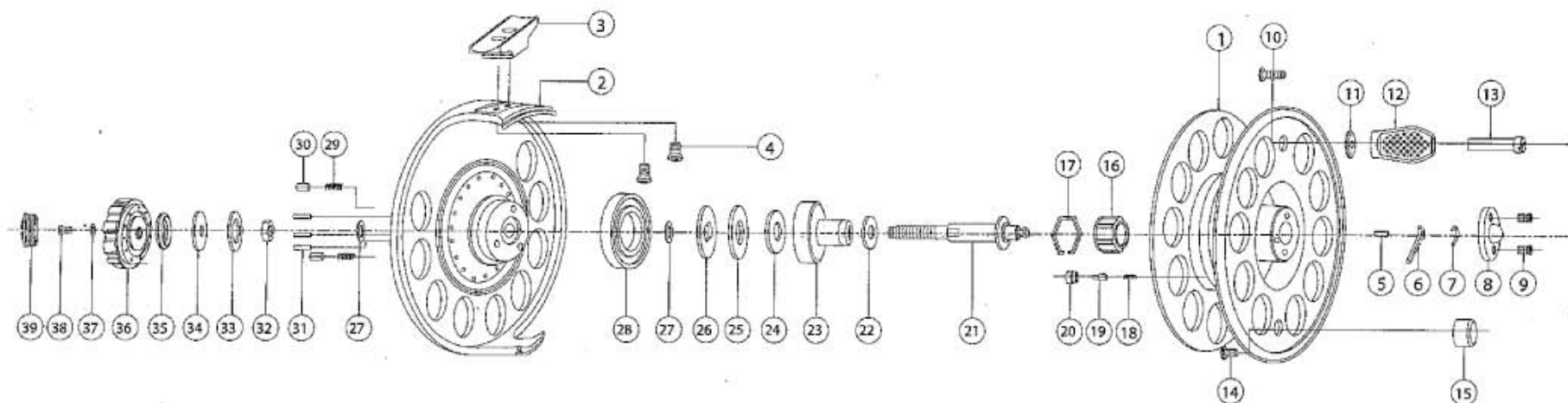
REDINGTON

CD SERIES

FOR LINE AND BACKING
CAPACITIES, PLEASE SEE
OUR ONLINE CATALOG.

REDINGTON CD SERIES

PARTS ARE NOT AVAILABLE FOR THE CD.
PLEASE SEND IN YOUR REEL SHOULD YOU NEED REPAIR.



NO.	PART NAME	NO.	PART NAME	NO.	PART NAME	NO.	PART NAME	NO.	PART NAME	NO.	PART NAME		
1	SPOOL	7	PUSH HEAD SPRING	13	HANDLE RIVET	19	SPOOL CLICK PIN	25	DISK PLATE V	31	DRAG PLATE PIN	37	DRAG KNOB LOCK W/S
2	HOUSING	8	PUSH HEAD COVER	14	BALANCE SCREW	20	SPOOL CLICK NUT	26	DRAG PLATE	32	MAIN SHAFT NUT II	38	DRAG KNOB SCREW
3	REEL FOOT	9	PUSH HEAD COVER SCREW	15	HANDLE BALANCE	21	MAIN SHAFT	27	GUIDE WASHER	33	DRAG REAR WASHER I	39	DRAG KNOB CAP
4	REEL FOOT SCREW	10	HANDLE SCREW	16	ONE WAY BEARING	22	DISK PLATE I	28	BALL BEARING II	34	DRAG REAR WASHER II		
5	PUSH HEAD PIN	11	HANDLE COLLAR	17	ONE WAY RETAINER	23	SLEEVE	29	DRAG CLICK SPRING	35	DRAG REAR WASHER III		
6	PUSH HEAD	12	HANDLE KNOB	18	SPOOL CLICK SPRING	24	DISK PLATE III	30	DRAG CLICK PIN	36	DRAG KNOB		