

## Redington Brakewater Maintenance Instructions

- 1) After fishing, wipe all salt deposits from reel surfaces with a clean damp cloth.
- 2) Inspect the interior of the reel by removing the spool and clean any salt or dirt.
- 3) Dry the reel thoroughly before storing.

\* If the reel is submerged in saltwater for long periods of time, follow the monthly maintenance schedule.

- ly:
- 1) Follow the instructions above in addition to the following.
  - 2) Remove the spool.
  - 3) Loosen the drag and remove the screw at the top of the shaft.
  - 4) Remove the bushing and sleeve from the reel.
  - 5) Check shaft and cork for wear.
  - 6) Lubricate the shaft of the reel with quality reel grease.
  - 7) Replace the sleeve, bushing and screw.
  - 8) Add a drop of oil to the main bearing by allowing it to drain under the bearings dust cover.

- ly:
- 1) Follow the daily and weekly instructions above.
  - 2) With mineral spirits and a clean rag wipe the surface of the cork disk removing any adhesive that may have migrated outside of the groove.
  - 3) Lubricate the cork with needs foot oil or any lubricant designed for cork disk drags.
  - 4) Remove the screw holding the drag knob on. This is a reverse thread.
  - 5) Spin the drag knob off counter clockwise and remove it.
  - 6) Remove the rear drag plate(part# 35) and spring(#36).
  - 7) Remove 3 pins(part# 32) from frame.
  - 8) Coat the pins/springs with grease and replace.
  - 9) Coat the drag knob click detents with grease. (Apply liberally)
  - 10) Replace the rear drag plate, and drag knob.
  - 11) Dress the drag knob screw with thread lock and replace. Make sure it is very tight.
  - 12) Check the handle of the reel and make sure the screw is tight. If it is loose, remove it and thread lock the screw and replace.
  - 13) Remove the 2 screws holding the spool release lever and clean out the salt and or grit. Pack this area with quality reel grease.

enance tips between uses:

- 1) Make sure salt deposits are removed.
- 2) Make sure the reel is as dry as possible.
- 3) Loosen the drag.

**REDINGTON**

**TACKLE CO.**

**BRAKEWATER SERIES**

**Switching the reel from left to right hand retrieve:**

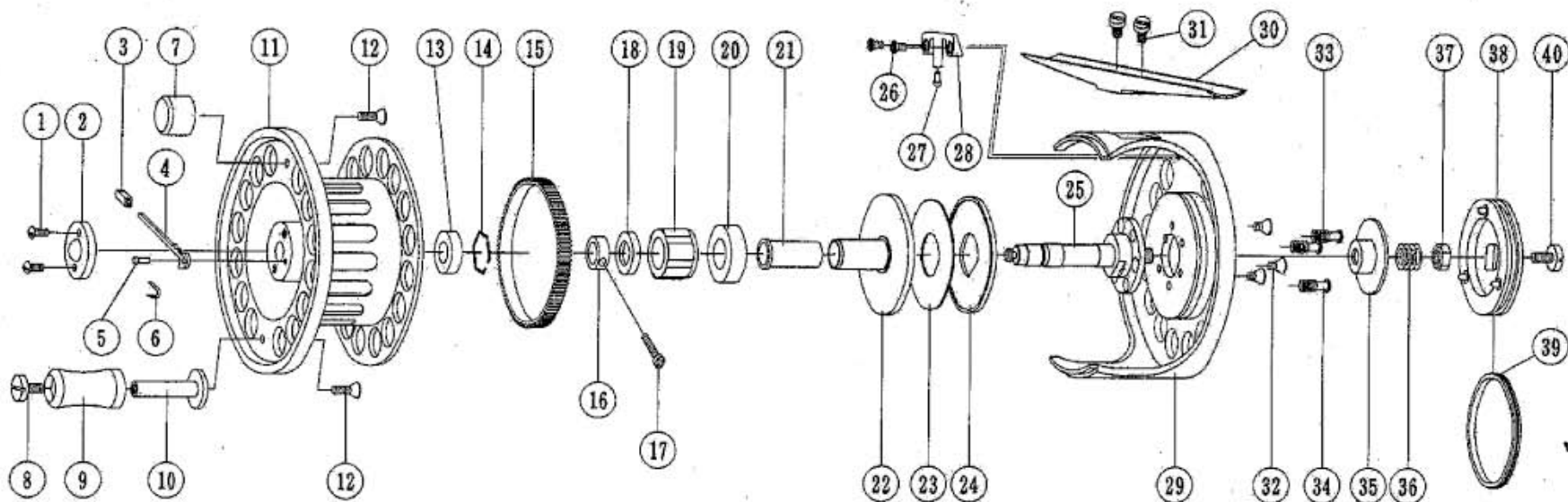
The reel comes left hand retrieve. To switch it to right hand, follow these steps.

- 1) Remove the spool from the frame.
- 2) Loosen the drag.
- 3) Remove the screw at the top of the shaft(part #17).
- 4) Remove part #16 and #18.
- 5) Remove, invert and replace part#19.(one way bearing)
- 6) Replace part #16 and #18.
- 7) Replace the screw at the top of the shaft(part #17).
- 8) Replace the spool.
- 9) The reel is now right hand retrieve.

**FOR LINE AND BACKING CAPACITIES, PLEASE SEE OUR ONLINE CATALOG ARCHIVE.**

PARTS ARE NOT AVAILABLE FOR THE BRAKEWATER.  
PLEASE SEND YOUR REEL IN FOR REPAIR.

## REDINGTON - BRAKE WATER SERIES



NO	PART NAME	NO	PART NAME	NO	PART NAME	NO	PART NAME	NO	PART NAME	NO	PART NAME
1	S-CAP SCREW	8	H/KNOB SCREW	15	SPOOL CLICK GEAR	22	DRAG SLEEVE	29	FRAME	36	DRAG SPRING
2	SPOOL CAP	9	HANDLE KNOB	16	CLIPPER	23	DRAG W/S - A	30	STAND	37	DRAG NUT
3	LEVER CAP	10	H/KNOB SHAFT	17	LOCK SCREW	24	DRAG PLATE	31	STAND SCREW	38	DRAG KNOB ASS' Y
4	LOCK LEVER	11	SPOOL	18	ADJUST COLLAR	25	MAIN SHAFT	32	M/SHAFT SCREW	39	D/KNOB RING
5	LOCK PIN	12	BALANCE SCREW	19	O/WAY B/B	26	C/CLAW SCREW	33	D/PLATE S/P	40	D/KNOB SCREW
6	LEVER S/P	13	SPOOL COLLAR	20	BALL BEARING	27	SPOOL CLICKER	34	D/PLATE PIN	41	
7	BALANCE WEIGHT	14	SPOOL RING	21	SLEEVE BUSH	28	C/CLAW HOLDER	35	DRAG REAR PLATE	42	