

TO change the drag from right to left handle

Take the spool off the housing

Find the spool wrench that comes with the reel

Place the wrench in the notches of the one way cover on the main shaft of the spool. Turn counter clockwise and remove.

Take out the one-way roller bearing, turn it over and place in back in the main shaft.

Replace the one way cover and carefully thread the cover back on. Tighten with the wrench.

REDINGTON

TACKLE CO.

AL SERIES

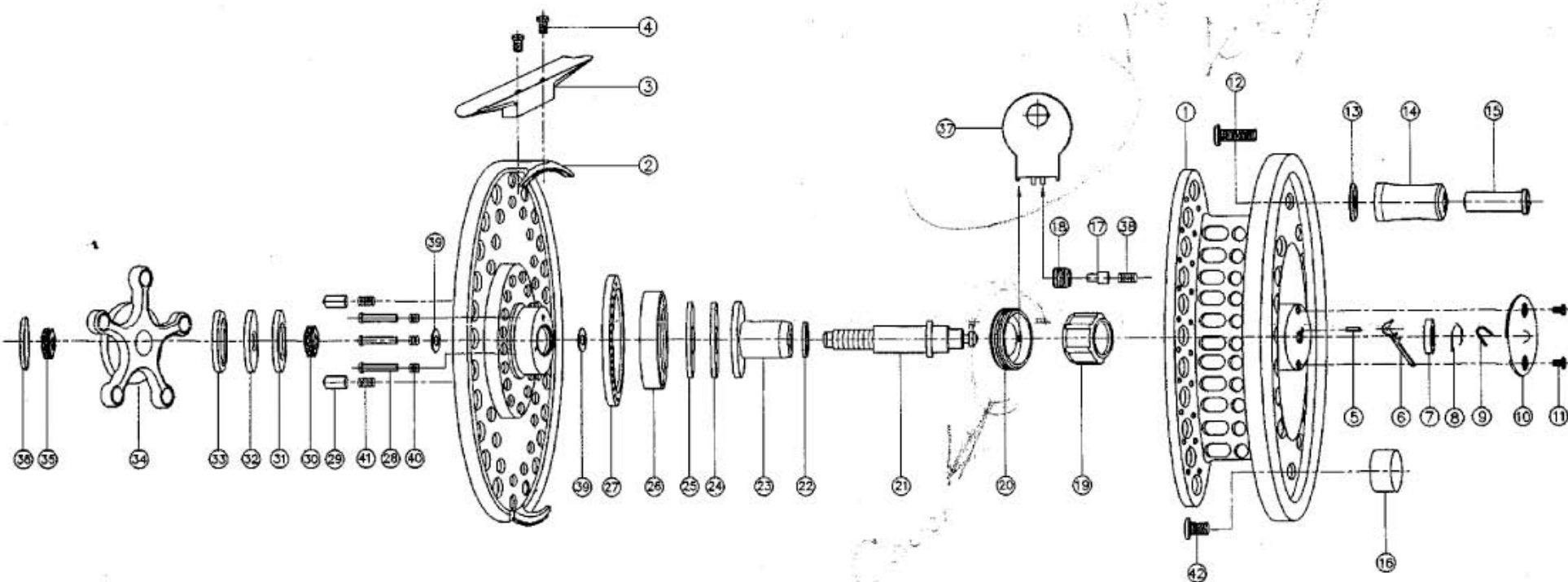
or AS

FOR BACKING AND LINE  
CAPACITIES, PLEASE SEE  
OUR ONLINE  
CATALOG ARCHIVE.

PARTS ARE NOT AVAILABLE FOR THE AL OR AS.  
PLEASE SEND YOUR REEL IN FOR REPAIR.

## REDINGTON AL SERIES

ALSO APPLICABLE FOR THE AS



NO.	PART NAME	NO.	PART NAME	NO.	PART NAME	NO.	PART NAME	NO.	PART NAME	NO.	PART NAME	NO.	PART NAME
1	SPOOL	7	BUSH BEARING	13	HANDLE COLLAR	19	ONE WAY BEARING	25	DRAG PLATE	31	DRAG REAR WASHER I	37	ONE WAY COVER HANDLE
2	HOUSING	8	RETAINER	14	HANDLE KNOB	20	ONE WAY COVER	26	BALL BEARING II	32	DRAG REAR WASHER II	38	SPOOL CLICK SPRING
3	REEL FOOT	9	PUSH HEAD SPRING	15	HANDLE RIVET	21	MAIN SHAFT	27	CLICK PLATE	33	DRAG REAR WASHER III	39	GUIDE WASHER
4	REEL FOOT SCREW	10	PUSH HEAD COVER	16	HANDLE BALANCE	22	DISK PLATE I	28	DRAG PLATE PIN	34	DRAG KNOB	40	DRAG PLATE SPRING
5	PUSH HEAD PIN	11	PUSH HEAD COVER SCREW	17	SPOOL CLICK PIN	23	SLEEVE	29	DRAG CLICK PIN	35	MAIN SHAFT NUT II	41	DRAG CLICK SPRING
6	PUSH HEAD	12	HANDLE SCREW	18	SPOOL CLICK NUT	24	DISK PLATE II	30	MAIN SHAFT NUT I	36	DRAG KNOB CAP	42	BALANCE SCREW