



SV SERIES

Redington
12715 Miller Road NE #101
Bainbridge Island, WA 98110

Phone # 800 - 253 - 2538
Fax # 206 - 780- 5465

web site : www.redington.com

= Maintenance of Redington SV reel =

Proper care and maintenance of this reel will ensure its performance.

1. Use a cloth or toothbrush with warm soapy water to remove any sediments or dirt in hard to reach places.
2. Rinse with Freshwater.
3. Dry all reel surfaces.
4. Lubricate the main shaft with grease.
5. Apply a thin layer of grease to all gear surfaces.
6. Apply a small amount of oil to one way bearing located inside of spool.

= Warranty =

The SV Reel series are covered by a one-year warranty against defects in materials or workmanship. In order to invoke this warranty, the original owner must send the entire Redington product, including the reel and parts, freight paid and insured to the Bainbridge Island address listed on the instruction sheet.

Please include a note explaining the problem along with the appropriate return address and phone number. For all shipments within the U.S., original owner will be responsible for \$20 fee to cover return shipping, insurance and processing. International customers will be asked to pay the actual shipping and insurance charges. Redington reserves the right to determine whether to repair or replace any Redington product covered by this warranty. For contact information please see our website for details or email warranty@redington.com

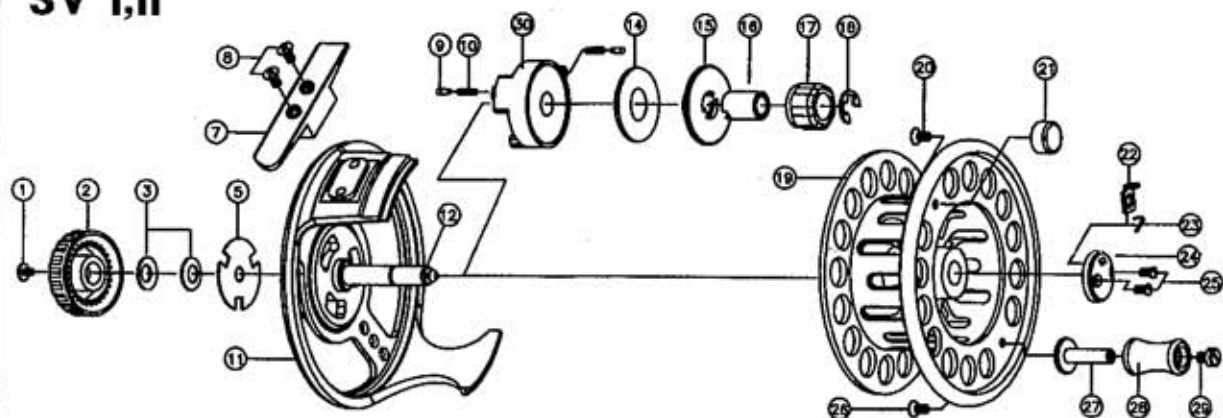
= Switching the reel from Left To Right Hand Retrieve =

- 1) Remove the spool from the frame.
- 2) Remove part #18 (e-clip).
- 3) Remove and invert one way bearing part #17.
- 4) Replace part #18 (e-clip).

= Backing Capacity =

Model	Line	Backing Capacity
SV I	WF#4	75yds / 20lb Backing
SV II	WF#5	125yds / 20lb Backing
SV III	WF#8	200yds / 20lb Backing

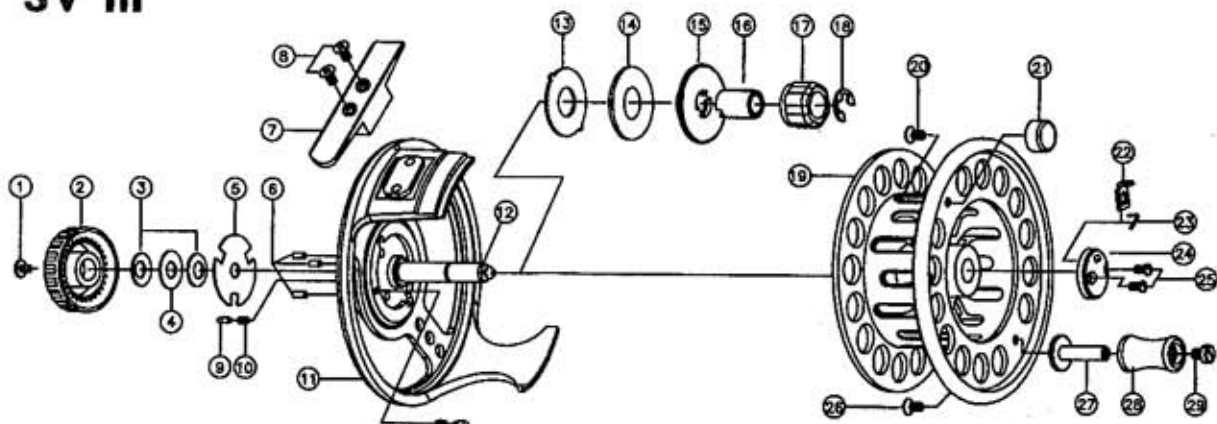
SV I,II



NO	PART NAME	NO	PART NAME	NO	PART NAME	NO	PART NAME
1	SCREW(DRAG KNOB)	10	CLICK PIN SPRING	18	E-CLIP	25	SCREW(RETAINER COVER)
2	DRAG KNOB	11	FRAME	19	SPOOL	26	SCREW(HANDLE RIVET)
3	SPRING WASHER	12	MAIN SHAFT	20	SCREW(BALANCE)	27	HANDLE RIVET
5	DRAG PLATE	14	DRAG "B" WASHER	21	BALANCE	28	HANDLE KNOB
7	FOOT	15	DRAG PLATE	22	SPOOL RETAINER	29	SCREW(HANDLE)
8	SCREW(FOOT)	16	BUSH(ONE WAY)	23	SPRING(RETAINER)	30	DRAG PUSHER
9	CLICK PIN	17	ONE WAY BEARING	24	RETAINER COVER		

Please send your reel into our warranty department should your reel need servicing. Parts are not available for purchase.

SV III



NO	PART NAME	NO	PART NAME	NO	PART NAME	NO	PART NAME
1	SCREW(DRAG KNOB)	9	CLICK PIN	17	ONE WAY BEARING	25	SCREW(RETAINER COVER)
2	DRAG KNOB	10	CLICK PIN SPRING	18	E-CLIP	26	SCREW(HANDLE RIVET)
3	SPRING WASHER	11	FRAME	19	SPOOL	27	HANDLE RIVET
4	WASHER	12	MAIN SHAFT	20	SCREW(BALANCE)	28	HANDLE KNOB
5	DRAG PLATE	13	DRAG "A" WASHER	21	BALANCE	29	SCREW(HANDLE)
6	DRAG PIN	14	DRAG "B" WASHER	22	SPOOL RETAINER		
7	FOOT	15	DRAG PLATE	23	SPRING(RETAINER)		
8	SCREW(FOOT)	16	BUSH(ONE WAY)	24	RETAINER COVER		