

TO change the drag from right to left handle

1. Take the spool off the housing
2. Find the spool wrench that comes with the reel
3. Place the wrench in the notches of the one way cover on the main shaft of the spool. Turn counter clockwise and remove.
4. Take out the one-way roller bearing, turn it over and place in back in the main shaft.
5. Replace the one way cover and carefully thread the cover back on. Tighten with the wrench.

Lubrication of Redington RS² series reels

With proper care and maintenance this Redington reel should last a lifetime. Please follow this procedure carefully and regularly to insure perfect performance.

1. Before lubricating soak reel in warm soapy water to remove all salt deposits from reel surfaces.
2. Place 2 drops of oil on roller bearing(16) allowing oil to penetrate bearing case.
3. With a toothpick (or similar) dab a small amount of lithium type grease on clicker spring(18). (Clicker must be removed to perform proper lubricating procedure.)
4. Smear a thin layer of grease on click plate(27).
5. Smear a small amount of grease on main shaft(21)
6. Lubricate handle with oil.

With proper cleaning and lubrication reel performance will be greatly increased.

REDINGTON

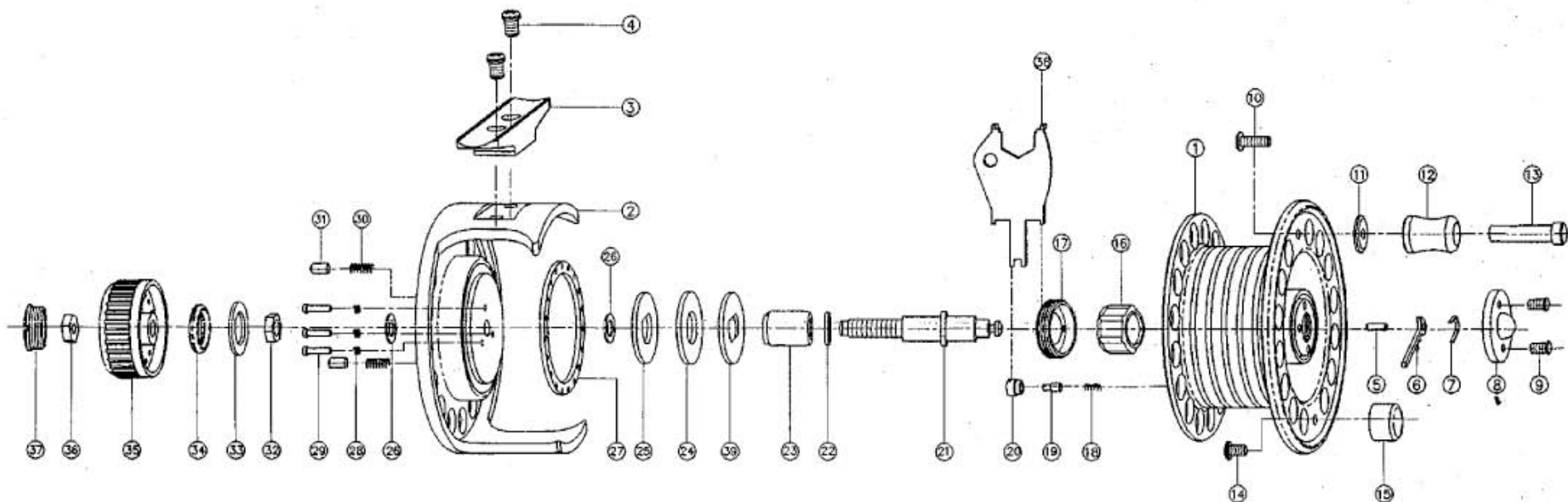
TACKLE CO.

RS² SERIES

FOR LINE AND BACKING
CAPACITIES, PLEASE SEE
OUR ONLINE CATALOG
ARCHIVE.

REDINGTON RS² SERIES

PARTS ARE NOT AVAILABLE FOR THE RS2.
PLEASE SEND YOUR REEL IN FOR REPAIR.



NO.	PART NAME	NO.	PART NAME	NO.	PART NAME	NO.	PART NAME	NO.	PART NAME	NO.	PART NAME	NO.	PART NAME
1	SPOOL	7	PUSH HEAD SPRING	13	HANDLE RIVET	19	SPOOL CLICK PIN	25	DRAG PLATE	31	DRAG CLICK PIN	37	DRAG KNOB CAP
2	HOUSING	8	PUSH HEAD COVER	14	BALANCE SCREW	20	SPOOL CLICK NUT	26	GUIDE WASHER	32	MAIN SHAFT NUT I	38	KEY
3	REEL FOOT	9	PUSH HEAD COVER SCREW	15	HANDLE BALANCE	21	MAIN SHAFT	27	SPOOL CLICK PLATE	33	DRAG REAR WASHER I	39	SLEEVE PLATE
4	REEL FOOT SCREW	10	HANDLE SCREW	16	ONE WAY BEARING	22	DISK PLATE I	28	DRAG PLATE SPRING	34	DRAG REAR WASHER III		
5	PUSH HEAD PIN	11	HANDLE COLLAR	17	ONE WAY COVER	23	SLEEVE	29	DRAG PLATE PIN	35	DRAG KNOB		
6	PUSH HEAD	12	HANDLE KNOB	18	SPOOL CLICK SPRING	24	DISK PLATE II	30	DRAG CLICK SPRING	36	MAIN SHAFT NUT II		